



RACING EQUIPMENT

SEASON 24/25

HEAD®
.COM

Contents

| | |
|-------------------------|----|
| Whats new this season? | 02 |
| Behind the Scenes | 04 |
| Race Ski Series | 06 |
| Race Binding Series | 12 |
| Raptor Race Boot Series | 16 |
| Race Protection | 22 |
| Race Accessories | 30 |
| Race Sportswear | 36 |
| FIS Regulations | 51 |
| Worldcup Rebels 23/24 | 52 |

THE NUMBER 1 RANKED SKI EQUIPMENT BRAND... AGAIN.

Once again, HEAD Worldcup Rebels have made their mark on the 2022/23 season. With a stunning 8,750 points, HEAD wins the FIS Brand Ranking. The highlight was the World Championships in Courchevel and Méribel, where the HEAD team was also the best ski brand, taking 13 individual medals. In the World Cup, the Rebels were on the podium an incredible 67 times - even more than last season.

HEAD's Racing Director, Rainer Salzgeber summed up the season as challenging but ultimately successful. 'From the World Championships onwards, we were on top form.'

This season, we also want to focus more on the Europa Cup, providing as much support as we can for our outstanding emerging athletes. Regarding our equipment, some exciting projects are awaiting you such as adjusted sidecuts and size splits of the two WCR Rebel Team skis, the new racing goggle NEVES PRO 5K RACE and a new design for the Rebels Racing Backpack.

Once again, our development team does a superb job with their meticulous work and attention to detail, helping the HEAD Worldcup Rebels to be the absolute best in the world. The invaluable experience of the team ends up in our equipment, a collection of skis, boots, apparel and accessories for the best ski team on the planet.

We make the equipment, you make history.



Yours,
Rainer Salzgeber
HEAD Racing Director

HOW TO BUILD EQUIPMENT THAT PERFORMS

THE ALL NEW WORLDCUP REBELS RACE LINE 24/25

In the Rebel's world we start with meticulous research and development, constantly enhancing and refining all our products.

We have a complete commitment to precision, performance and winning. If one person sums up what Worldcup Rebels purpose is, it has to be Aksel Lund Svindal, one of our most passionate team members who we've worked closely with, helping us develop the superb race line.



A ski you can fully trust with more grip on the snow, letting you fully focus on your technique.

Aksel Lund Svindal

WHAT'S **NEW** THIS SEASON?

NEW RACING GOGGLE

Your field of vision has never been wider. The unique lens design of the new NEVES PRO 5K RACE, achieved through progressive industrial design, paired with our contrast-enhancing and color-brilliant 5K lens technology enables you to read every detail of the terrain when it comes down to it in your next race.



NEW WCR REBEL TEAM SKIS

New sidecuts and an adjusted size split makes carving with the two WCR Rebel Team skis more attainable than ever for junior ski racers.



NEW DESIGN FOR THE REBELS RACING BACKPACK

The redesigned Rebels Racing Backpack is slimmer without losing its renown capacity to carry what athletes need for training or race day. Multiple pockets, a boot compartment separated by durable material and accessed by the back panel. Ergonomic shoulder straps help distribute weight for a better carrying solution.





THE TEAM BEHIND THE PERFORMANCE

WE CAN ALL SEE THE ATHLETE POISED IN THE START HUT, BUT IT TAKES A TEAM TO TOP THE PODIUM.

There is a hard-working group of people behind any great performance on the slopes. Nothing is left to chance. Everything has been carefully monitored and measured such as snow characteristics, slope conditions, snow and air temperatures. The way the run has been set also plays a decisive role in selecting the right equipment. Once all the parameters are known, it's time for final fine-tuning so that the athlete has absolute trust in HEAD equipment at every race and in all slope and weather conditions.

We take all the technical experience we gain in the World Cup and put it into our racing collection. Former HEAD Worldcup Rebels like Aksel Lund Svindal and Anna Veith, add their valuable knowledge to help us further refine and enhance the performance of our equipment. We don't just want to be the best athletes in the World Cup. We want to be the best performing equipment on the planet.





WCR E-SL REBEL FIS

| ART.NUMBER | LENGTH | SIDECUT | RADIUS |
|------------|---------------------|----------------|--------|
| 313024 | 151 (not FIS conf.) | 111 / 65 / 96 | 11,9 |
| 313084 | 156 | 114 / 66 / 100 | 12,4 |
| | 158 | 114 / 66 / 104 | 12,0 |
| | 165 | 120 / 67 / 103 | 12,5 |
| | 168 | 119 / 68 / 103 | 12,8 |

PRODUCT FEATURES

EMC, Graphene Worldcup Sandwich Construction, RD Racing Top Sheet, Race Structured High Speed UHM C Base, Rebel Camber, FIS approved (except 313024), Infra-Red Base Waxing

| | |
|---------|--|
| PLATE | RACEPLATE WCR 14 SHORT |
| BINDING | 100900 FREEFLEX ST 20 X RD Brake [A] 85 mm |
| | 100902 FREEFLEX ST 16 X RD Brake [A] 85 mm |
| | 100904 FREEFLEX ST 16 Brake [A] 85 mm |
| | 100905 FREEFLEX ST 14 Brake [A] 85 mm |



WCR E-GS REBEL FIS

| ART.NUMBER | LENGTH | SIDECUT | RADIUS |
|------------|--------|---------------|--------|
| 313003 | 183 | 99 / 65 / 81 | 30,5 |
| | 188 | 98 / 65 / 84 | 31,0 |
| | 193 | 101 / 65 / 83 | 30,0 |

PRODUCT FEATURES

EMC, Graphene Worldcup Sandwich Construction, RD Racing Top Sheet, Race Structured High Speed UHM C Base, Rebel Camber, FIS approved for Worldcup and European Cup and all Continental Cup, Infra-Red Base Waxing

| | |
|---------|--|
| PLATE | RACEPLATE WCR 14 SHORT |
| BINDING | 100900 FREEFLEX ST 20 X RD Brake [A] 85 mm |
| | 100902 FREEFLEX ST 16 X RD Brake [A] 85 mm |
| | 100904 FREEFLEX ST 16 Brake [A] 85 mm |



WCR E-GS REBEL PRO

| ART.NUMBER | LENGTH | SIDECUT | RADIUS |
|------------|--------|---------------|--------|
| 313063 | 177 | 106 / 68 / 90 | 22,0 |
| | 183 | 104 / 68 / 89 | 25,4 |
| | 189 | 104 / 68 / 89 | 27,0 |
| | 191 | 107 / 68 / 87 | 28,0 |

PRODUCT FEATURES

EMC, Graphene Worldcup Sandwich Construction, RD Racing Top Sheet, Race Structured High Speed UHM C Base, Rebel Camber, Infra-Red Base Waxing

| | |
|---------|--|
| PLATE | RACEPLATE WCR 14 SHORT |
| BINDING | 100900 FREEFLEX ST 20 X RD Brake [A] 85 mm |
| | 100902 FREEFLEX ST 16 X RD Brake [A] 85 mm |
| | 100903 FREEFLEX ST 14 X Brake [A] 85 mm |
| | 100904 FREEFLEX ST 16 Brake [A] 85 mm |

THE MASTERS' RACE WEAPON

One model in four different sizes, same wider footprint, distinguished only by its radius. Therefore we can offer a tailor made setup for each individual needs and requests.

The skis offer the same construction and technology as the FIS certified models. The big difference is the wider footprint as it delivers a less aggressive setup but full performance. The lower radius allows for easier and super manoeuvrable handling.

That would be the best characterization as the Masters rules don't follow the FIS rules.



WCR E-GS REBEL

| ART.NUMBER | LENGTH | SIDECUT | RADIUS |
|---------------|--------|---------------|--------|
| 313043/313053 | 176 | 102 / 65 / 87 | 23,0 |
| 313043/313053 | 181 | 102 / 65 / 86 | 25,0 |
| 313043 | 186 | 104 / 65 / 87 | 25,0 |
| | 188 | 102 / 65 / 85 | 27,5 |

PRODUCT FEATURES

EMC, Graphene Worldcup Sandwich Construction, RD Racing Top Sheet, Race Structured High Speed UHM C Base, Rebel Camber, Infra-Red Base Waxing

| | |
|---------|---|
| PLATE | RACEPLATE WCR 14 SHORT (313043) RACEPLATE WCR Team (313053) |
| BINDING | 100902 FREEFLEX ST 16 X RD Brake [A] 85 mm 100903 FREEFLEX ST 14 X Brake [A] 85 mm 100904 FREEFLEX ST 16 Brake [A] 85 mm 100905 FREEFLEX ST 14 Brake [A] 85 mm |



WCR E-SG REBEL

| ART.NUMBER | LENGTH | SIDECUT | RADIUS |
|------------|--------|----------------|--------|
| 318063 | 202 | 95 / 65 / 79 | 40,5 |
| 318053 | 207 M | 93,5 / 65 / 78 | 45,5 |
| 318043 | 207 W | 95 / 65 / 80 | 42,0 |
| 318113 | 210 | 96 / 65 / 81 | 42,5 |
| 318033 | 213 | 95 / 65 / 79 | 45,0 |

PRODUCT FEATURES

EMC, Graphene Worldcup Sandwich Construction, RD Racing Top Sheet, Race Structured High Speed UHM C Base, Rebel Camber, FIS approved for Worldcup and European Cup and all Continental Cups, Infra-Red Base Waxing, Traction (Length 207 W, 210 and 213)

| | |
|---------|--|
| PLATE | DH RACEPLATE |
| BINDING | 100901 FREEFLEX ST 20 X RS Brake [A] 85 mm 100902 FREEFLEX ST 16 X RD Brake [A] 85 mm |



WCR E-DH REBEL

| ART.NUMBER | LENGTH | SIDECUT | RADIUS |
|------------|--------|--------------|--------|
| 318023 | 210 | 91 / 65 / 78 | 50,0 |
| 318013 | 215 | 92 / 65 / 79 | 50,0 |
| 318003 | 218 | 92 / 65 / 80 | 50,0 |

PRODUCT FEATURES

EMC, Graphene Worldcup Sandwich Construction, RD Racing Top Sheet, Race Structured High Speed UHM C Base, Rebel Camber, FIS approved for Worldcup and European Cup and all Continental Cups, Infra-Red Base Waxing, Traction (Length 215 and 218)

| | |
|---------|--|
| PLATE | DH RACEPLATE |
| BINDING | 100901 FREEFLEX ST 20 X RS Brake [A] 85 mm |



WCR E-SG REBEL

| ART.NUMBER | LENGTH | SIDECUT | RADIUS |
|------------|--------|--------------|--------|
| 318103 | 175 | 93 / 65 / 82 | 27,0 |
| 318093 | 185 | 98 / 65 / 81 | 30,0 |
| 318083 | 195 | 98 / 65 / 82 | 33,0 |
| 318073 | 200 | 97 / 65 / 81 | 36,0 |

PRODUCT FEATURES

EMC, Graphene Worldcup Sandwich Construction, RD Racing Top Sheet, Race Structured High Speed UHM C Base, Rebel Camber, FIS approved

| | |
|---------|---|
| PLATE | RACEPLATE WCR 14 SHORT |
| BINDING | 100902 FREEFLEX ST 16 X RD Brake [A] 85 mm 100903 FREEFLEX ST 14 X Brake [A] 85 mm 100904 FREEFLEX ST 16 Brake [A] 85 mm 100905 FREEFLEX ST 14 Brake [A] 85 mm |



WCR E.SL REBEL TEAM

| ART.NUMBER | LENGTH | SIDECUT | RADIUS |
|------------|--------|---------------|--------|
| 314234 | 118 | 107 / 62 / 88 | 8,0 |
| | 125 | 109 / 62 / 90 | 8,5 |
| | 132 | 111 / 63 / 93 | 9,0 |
| | 139 | 111 / 63 / 94 | 10,0 |
| | 146 | 112 / 64 / 96 | 11,0 |
| | 153 | 112 / 64 / 97 | 12,0 |
| | 160 | 113 / 65 / 99 | 13,0 |

PRODUCT FEATURES

Graphene Worldcup Sandwich Construction, EMC F, RD Racing Top Sheet, Race Structured UHM C Base, Rebel Camber

| | |
|---------|---|
| PLATE | RACEPLATE WCR Team |
| BINDING | 100903 FREEFLEX ST 14 X Brake [A] 85 mm |
| | 100905 FREEFLEX ST 14 Brake [A] 85 mm |
| | 100906 FREEFLEX 11 RACE Brake [A] 85 mm |
| | 100921 EVO 9 GW CA Brake [D] 85 mm |



NEW WCR E.GS REBEL TEAM

| ART.NUMBER | LENGTH | SIDECUT | RADIUS |
|------------|--------|---------------|--------|
| 314004 | 116 | 100 / 62 / 80 | 10,0 |
| | 124 | 97 / 63 / 79 | 13,0 |
| | 132 | 99 / 63 / 81 | 14,0 |
| | 140 | 101 / 64 / 83 | 15,0 |
| | 148 | 102 / 64 / 85 | 16,0 |
| | 156 | 103 / 64 / 87 | 17,0 |
| | 164 | 104 / 65 / 88 | 19,0 |
| | 172 | 103 / 65 / 88 | 21,0 |

PRODUCT FEATURES

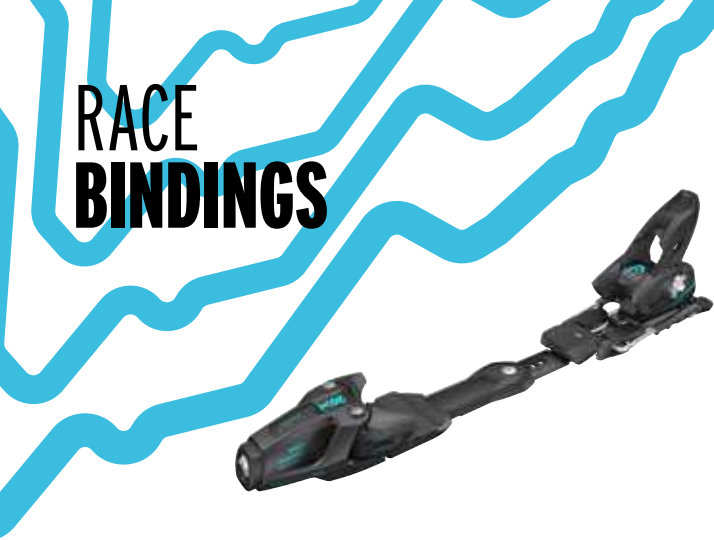
Graphene Worldcup Sandwich Construction, EMC F, RD Racing Top Sheet, Race Structured UHM C Base, Rebel Camber

| | |
|---------|---|
| PLATE | RACEPLATE WCR Team |
| BINDING | 100903 FREEFLEX ST 14 X Brake [A] 85 mm |
| | 100905 FREEFLEX ST 14 Brake [A] 85 mm |
| | 100906 FREEFLEX 11 RACE Brake [A] 85 mm |
| | 100921 EVO 9 GW CA Brake [D] 85 mm |

MAKE HISTORY
WITH US



WORLD CUP
REBELS



FREEFLEX ST 20 X RD

| ARTICLE NUMBER |
|---|
| 100900 - matt black/speed blue, Brake [A] 85 mm |

| PRODUCT FEATURES |
|--|
| Stream Toe, AFD ST POM (X), Freeflex Pro, RACE PRO RD Heel |

| PRODUCT DETAILS |
|--------------------|
| STAND HEIGHT 16 mm |
| DIN 10,5 - 20 |
| WEIGHT 1575 g/pc. |



FREEFLEX ST 20 X RS

| ARTICLE NUMBER |
|---|
| 100901 - matt black/speed blue, Brake [A] 85 mm |

| PRODUCT FEATURES |
|--|
| Stream Toe, AFD ST POM (X), Freeflex Pro, RACE PRO RS Heel |

| PRODUCT DETAILS |
|--------------------|
| STAND HEIGHT 16 mm |
| DIN 10,5 - 20 |
| WEIGHT 1575 g/pc. |



FREEFLEX ST 16 X RD

| ARTICLE NUMBER |
|---|
| 100902 - matt black/speed blue, Brake [A] 85 mm |

| PRODUCT FEATURES |
|--|
| Stream Toe, AFD ST POM (X), Freeflex Pro, RACE PRO RD Heel |

| PRODUCT DETAILS |
|--------------------|
| STAND HEIGHT 16 mm |
| DIN 10,5 - 16 |
| WEIGHT 1575 g/pc. |

RACE BINDINGS



FREEFLEX ST 14 X

| ARTICLE NUMBER |
|---|
| 100903 - matt black/speed blue, Brake [A] 85 mm |

| PRODUCT FEATURES |
|--|
| Stream Toe, AFD ST Teflon, Freeflex Pro, RACE PRO (spindle) Heel |

| PRODUCT DETAILS |
|--------------------|
| STAND HEIGHT 16 mm |
| DIN 7 - 14 |
| WEIGHT 1350 g/pc. |



FREEFLEX ST 16

| ARTICLE NUMBER |
|---|
| 100904 - matt black/speed blue, Brake [A] 85 mm |

| PRODUCT FEATURES |
|--|
| Stream Toe, AFD ST Teflon, Freeflex Pro, RACE PRO Heel |

| PRODUCT DETAILS |
|--------------------|
| STAND HEIGHT 17 mm |
| DIN 5 - 16 |
| WEIGHT 1325 g/pc. |



FREEFLEX ST 14

| ARTICLE NUMBER |
|---|
| 100905 - matt black/speed blue, Brake [A] 85 mm |

| PRODUCT FEATURES |
|--|
| Stream Toe, AFD ST Teflon, Freeflex Pro, NX Heel |

| PRODUCT DETAILS |
|--------------------|
| STAND HEIGHT 17 mm |
| DIN 4 - 14 |
| WEIGHT 1235 g/pc. |



FREEFLEX 11 RACE

ARTICLE NUMBER

100906 - matt black/speed blue, Brake [A] 85 mm

PRODUCT FEATURES

RX Toe with TRP System, Full Diagonal, Teflon, Freeflex Pro, NX Heel

PRODUCT DETAILS

STAND HEIGHT 17 mm

DIN 3 - 11

WEIGHT 1110 g/pc.



EVO 9 GW CA

ARTICLE NUMBER

100921 - solid black/speed blue, Brake [D] 85 mm

PRODUCT FEATURES

SX Lite Toe with TRP System, Full Diagonal, AFS GW AC, SX LITE Heel

PRODUCT DETAILS

STAND HEIGHT 21 mm

DIN 2 - 9

WEIGHT 780 g/pc.



ADDITIONAL SPARE PARTS
FOR EVO 9 GW CA

To provide outstanding performance and highest stability also for our young speedstars we offer a vertical blocked slider as spare part. Please note: ONLY for Alpine TYPE C & GripWalk TYPE C ski boots.

Art. No.: 163113 - AFS SX Jr./Kid blocked (Alpine TYPE C & GW C), 1 pair



TUNING KIT ST

Art. No.: 163127

The Tuning Kit offers a variety of options to adapt the binding's stand height and ramp angle for every racer individually.

The Tuning Kit includes tuning parts for following binding models:

HEAD:

FREEFLEX ST 20 X RD

FREEFLEX ST 20 X RS

FREEFLEX ST 16 X RD

FREEFLEX ST 14 X

FREEFLEX ST 16

FREEFLEX ST 14

FREEFLEX 11 RACE



BRAKES

| BRAKE CODE | BINDINGS | ART. NO. | BRAKE MODEL/STAND HEIGHT-WIDTH |
|------------|---------------------|----------|--|
| [A] | FREEFLEX ST 20 X RD | | |
| | FREEFLEX ST 20 X RS | | |
| | FREEFLEX ST 16 X RD | 163032 | Power Brake ² Race PRO 16-85 [A] |
| | FREEFLEX ST 14 X | 163033 | Power Brake ² Race PRO 17-85 [A] |
| | FREEFLEX ST 16 | 163034 | Power Brake ² Race PRO 18-85 [A] |
| | FREEFLEX ST 14 | 163039 | Power Brake ² Race PRO wide 18-85 [A] |
| [D] | FREEFLEX 11 RACE | | |
| | EVO 9 GW CA | 163044 | Power Brake ² LD 85 [D] |

SINGLE LIFTER SETS

These lifter sets can also be used to tune the binding and boost performance.

Use the screws which are included in the lifter set.

| BINDING | SINGLE LIFTER SET |
|---------------------|---|
| FREEFLEX ST 20 X RD | 162905 LIFTER SET 3MM (1 SET) |
| FREEFLEX ST 20 X RS | 162906 LIFTER SET 5MM (1 SET) |
| FREEFLEX ST 16 X RD | 162933 LIFTER SET 3/5MM - HEEL/TOE (1 SET) |
| FREEFLEX ST 14 X | 162934 LIFTER SET 4/6MM - HEEL/TOE (1 SET) |
| FREEFLEX ST 16 | 163075 LIFTER SET 2/3MM - HEEL/TOE (1 SET) |
| FREEFLEX ST 14 | 163076 LIFTER SET 5/8MM - HEEL/TOE (1 SET) |
| FREEFLEX 11 RACE | 163135 LIFTER SET 1/2 MM - HEEL/TOE (1 SET) |
| | 163136 LIFTER SET 4/5 MM - HEEL/TOE (1 SET) |
| | 163187 LIFTER SET 5/6 MM - HEEL/TOE (1 SET) |

ADDITIONAL SPARE PARTS

162803 HEEL AFD INSERT FREEFLEX PRO (10 PAIRS)

162848 FREEFLEX PRO BACK BAND HOUSING (1 PAIR)

162862 FREEFLEX PRO LOCKING ELEMENT (1 PAIR)

163148 AFD ST TEFLON (1 PAIR)

163149 AFD ST POM (X) (1 PAIR)

RACE BOOTS



RAPTOR RACING DEPT M5

ARTICLE NUMBER

603051 White

PRODUCT FEATURES

Racing flex tuning, Cuff Alignemnt, Extended Toe Box, Rear support tuning, Racing spoiler, FIS approved sole thickness, Flat foam wedge

LINER

Racing WCR Pro LF, Adjustable tongue, Laces option, Racing footbed, Velcro SL 53mm

BUCKLES

4 screwed micro-adjustable Spineflex racing dpt alloy buckles, RD Low profile buckles

PRODUCT DETAILS

| | | | |
|-------|------------------|--|--|
| LEVEL | Athlete | | |
| FLEX | 170/160 | | |
| SIZES | 225-235-....-285 | | |
| SHELL | Racing PU | | |
| LAST | RD 1500cc | | |

| | | | |
|------|------|------|------|
| Last | 91 | 93 | 95 |
| Size | 25.5 | 26.5 | 27.5 |

| | |
|--------------|---|
| ERGO BALANCE | Race balance |
| | Forward lean: classic method 16°, new method 9° |
| | Ramp angle 4° |

RAPTOR WCR 2

ARTICLE NUMBER

603013 White

PRODUCT FEATURES

Racing flex tuning, Cuff Alignemnt, Extended Toe Box, Rear support tuning, Racing spoiler, FIS approved sole thickness, Flat foam wedge

LINER

Racing WCR Pro LF, Adjustable tongue, Laces option, Racing footbed, Velcro SL 53mm

BUCKLES

4 screwed micro-adjustable Spineflex racing dpt alloy buckles, RD Low profile buckles

PRODUCT DETAILS

| | | | |
|-------|------------------|--|--|
| LEVEL | Athlete | | |
| FLEX | 160/150 | | |
| SIZES | 225-235-....-285 | | |
| SHELL | Racing PU | | |
| LAST | RD 1500cc | | |

| | | | |
|------|------|------|------|
| Last | 91 | 93 | 95 |
| Size | 25.5 | 26.5 | 27.5 |

| | |
|--------------|---|
| ERGO BALANCE | Race balance |
| | Forward lean: classic method 16°, new method 9° |
| | Ramp angle 4° |

RAPTOR WCR 3

ARTICLE NUMBER

603016 White

PRODUCT FEATURES

Racing flex tuning, Cuff Alignemnt, Extended Toe Box, Rear support tuning, Racing spoiler, FIS approved sole thickness, Flat foam wedge

LINER

Racing WCR Pro LF, Adjustable tongue, Laces option, Racing footbed, Velcro SL 53mm

BUCKLES

4 screwed micro-adjustable Spineflex racing dpt alloy buckles, RD Low profile buckles

PRODUCT DETAILS

| | | | |
|-------|------------------|--|--|
| LEVEL | Athlete | | |
| FLEX | 150/140 | | |
| SIZES | 225-235-....-285 | | |
| SHELL | Racing PU | | |
| LAST | RD 1500cc | | |

| | | | |
|------|------|------|------|
| Last | 91 | 93 | 95 |
| Size | 25.5 | 26.5 | 27.5 |

| | |
|--------------|---|
| ERGO BALANCE | Race balance |
| | Forward lean: classic method 16°, new method 9° |
| | Ramp angle 4° |



RACE BOOTS

RAPTOR WCR 4

ARTICLE NUMBER

603019 White

PRODUCT FEATURES

Racing flex tuning, Cuff Alignment, Extended Toe Box, Rear support tuning, Racing spoiler, FIS approved sole thickness, Flat foam wedge

LINER

Racing WCR Pro LF, Adjustable tongue, Laces option, Racing footbed, Velcro SL 53mm

BUCKLES

4 screwed micro-adjustable Spineflex racing dpt alloy buckles, RD Low profile buckles

PRODUCT DETAILS

| | | | |
|-------|------------------|--|--|
| LEVEL | Athlete | | |
| FLEX | 130/120 | | |
| SIZES | 225-235-....-285 | | |
| SHELL | Racing PU | | |

| | | | |
|------|------|------|------|
| Last | 91 | 93 | 95 |
| Size | 25.5 | 26.5 | 27.5 |

| | |
|--------------|---|
| ERGO BALANCE | Race balance |
| | Forward lean: classic method 16°, new method 9° |
| | Ramp angle 4° |

RAPTOR WCR 5 SC

ARTICLE NUMBER

603020 White

PRODUCT FEATURES

Racing flex tuning, Cuff Alignment, Extended Toe Box, Rear support tuning, Adult Norm, FIS approved sole thickness, Race balance, Flat foam wedge

LINER

Racing WCR Pro LF, Adjustable tongue, Laces option, Racing footbed, Velcro SL 53mm

BUCKLES

4 screwed micro-adjustable Spine-Flex alloy buckles, Racing low profile buckles

PRODUCT DETAILS

| | | | |
|-------|-------------------|--|--|
| LEVEL | Athlete | | |
| FLEX | 110/100 | | |
| SIZES | 225-235-....-275 | | |
| SHELL | PU - (SHORT CUFF) | | |

| | | | |
|------|------|------|------|
| Last | 91 | 93 | 95 |
| Size | 25.5 | 26.5 | 27.5 |

| | |
|--------------|---|
| ERGO BALANCE | Race balance |
| | Forward lean: classic method 16°, new method 9° |
| | Ramp angle 4° |

RAPTOR WCR 6 SC

ARTICLE NUMBER

603022 White

PRODUCT FEATURES

Racing flex tuning, Cuff Alignment, Extended Toe Box, Rear support tuning, Adult Norm, FIS approved sole thickness, Race balance, Flat foam wedge

LINER

Racing WCR Pro, Laces option, Racing footbed, 45mm velcro strap

BUCKLES

4 screwed micro-adjustable alloy buckles, Racing low profile buckles

PRODUCT DETAILS

| | | | |
|-------|-------------------|--|--|
| LEVEL | Athlete | | |
| FLEX | 90/80 | | |
| SIZES | 225-235-....-275 | | |
| SHELL | PU - (SHORT CUFF) | | |
| LAST | RD 1500cc | | |

| | | | |
|------|------|------|------|
| Last | 91 | 93 | 95 |
| Size | 25.5 | 26.5 | 27.5 |

| | |
|--------------|---|
| ERGO BALANCE | Race balance |
| | Forward lean: classic method 16°, new method 9° |
| | Ramp angle 4° |





RAPTOR WCR 90

ARTICLE NUMBER
603510 White

PRODUCT FEATURES

Flex tuning, Cuff Alignment, Extended Toe Box, Rear support tuning, JR Racing spoiler, FIS approved sole thickness, Flat foam wedge

LINER

Jr WCR HF Pro, HP frame foot-bed, 40mm velcro strap, Laces option

BUCKLES

4 micro-adjustable racing alloy buckles, Racing low profile buckles

PRODUCT DETAILS

| | | | |
|-----------|---------------------|------|------|
| LEVEL | Professional | | |
| FLEX | 100/90 | | |
| SIZES | 220/225-...-280/285 | | |
| SHELL | PU - (SHORT CUFF) | | |
| LAST | RS 1800cc | | |
| Last Size | 94 | 96 | 98 |
| | 25.5 | 26.5 | 27.5 |



RAPTOR WCR 70

ARTICLE NUMBER
603515 White

PRODUCT FEATURES

Flex tuning, Cuff Alignment, Extended Toe Box, Rear support tuning, JR Racing spoiler, FIS approved sole thickness, Flat foam wedge

LINER

Jr WCR HF Pro, HP frame foot-bed, 40mm velcro strap, Laces option

BUCKLES

4 micro-adjustable racing alloy buckles, Racing low profile buckles

PRODUCT DETAILS

| | | | |
|-----------|---------------------|------|------|
| LEVEL | Expert | | |
| FLEX | 80/70 | | |
| SIZES | 220/225-...-280/285 | | |
| SHELL | PU - (SHORT CUFF) | | |
| LAST | RS 1800cc | | |
| Last Size | 94 | 96 | 98 |
| | 25.5 | 26.5 | 27.5 |



RAPTOR 70

ARTICLE NUMBER
603520 White

PRODUCT FEATURES

Jr flex tuning, Adult norm (size 220 up)

LINER

Junior team, Self-shaping foot-bed, 30mm velcro strap

PRODUCT DETAILS

| | | | |
|--------------|-----------------------------|--|--|
| LEVEL | Expert | | |
| FLEX | 70/60 | | |
| SIZES | 205-215-220/225-...-270/275 | | |
| SHELL | SL | | |
| LAST | JR Racing | | |
| ERGO BALANCE | Race balance | | |
| | Forward Lean 16° | | |
| | Ramp angle 4° | | |

BUCKLES

4 micro-adjustable alloy buckles, Low profile buckles

GRIP WALK OPTION





**POWER STRAP
RAPTOR WCR**

ARTICLE NUMBER
60123136 (53 mm)



**POWER STRAP
RAPTOR WCR**

ARTICLE NUMBER
60121788 (39 mm)



**POWER STRAP
SIDAS 2024**

ARTICLE NUMBER
60123629 (SOFT P3)
60123699 (HARD P4)



RACE TONGUE SL

ARTICLE NUMBER
60123520



INNERBOOT FOAM PRO

ARTICLE NUMBER
60118598



TONGUE FOAM PRO

ARTICLE NUMBER
60118782



TUNING KIT RACING

ARTICLE NUMBER
60123540



RACING CARBON SPOILER

ARTICLE NUMBER
60122049



**KIT REAR CUFF SPOILER
RACING DEPT.**

ARTICLE NUMBER
60123478 (6 mm)
60123479 (9 mm)



KIT 1 PAIR SLALOM BUCKLES

ARTICLE NUMBER
60123755



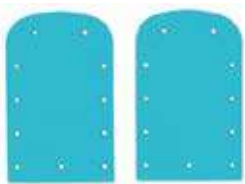
SPOILER RAPTOR WCR RACE

ARTICLE NUMBER
60123201



DISPENSER FOAM RAPTOR

ARTICLE NUMBER
60113662



TOE AND HEEL LIFTERS

ARTICLE NUMBER
60121988 (3 mm)
60121989 (5 mm)
60121990 (7 mm)



FOAM KIT HEAD

ARTICLE NUMBER
60113212 (220-250)
0113213 (260-270)
60116390 (280-300)





RACE PROTECTION



DOWNFORCE MIPS

| ARTICLE NUMBER | | PRODUCT FEATURES |
|-------------------|----------|--|
| 320113 matt black | | Hardshell Technology, MIPS, Dual Density Core, Thermal Ventilation, Chinguard Compatible, Changeable Adapter Plates, Microfleece, Beanie Liner, Removable Neckgator, Metal Chinstrap Buckle, Helmet Pouch Included, EN 1077:2007 Class A, ASTM F 2040, FIS RH 2013 |
| SIZES | | |
| XS | 52-53 cm | |
| S | 54-55 cm | |
| M | 56-57 cm | |
| L | 58-59 cm | |
| XL | 60-61 cm | |
| XXL | 62-63 cm | |



DOWNFORCE

| ARTICLE NUMBER | | PRODUCT FEATURES |
|--|----------|--|
| 320224 speedblue/white 320223 white | | Hardshell Technology, Dual Density Core, Chinguard Compatible, Thermal Ventilation, Changeable Adapter Plates, Microfleece, Beanie Liner, Removable Neckgator, Metal Chinstrap Buckle, Helmet Pouch Included, EN 1077:2007 Class A, ASTM F 2040, FIS RH 2013 |
| SIZES | | |
| XS | 52-53 cm | |
| S | 54-55 cm | |
| M | 56-57 cm | |
| L | 58-59 cm | |
| XL | 60-61 cm | |
| XXL | 62-63 cm | |



DOWNFORCE JR

| ARTICLE NUMBER | | PRODUCT FEATURES |
|----------------------------------|----------|--|
| 320323 speedblue 320333 black | | Hardshell Technology, Dual Density Core, Chinguard Compatible, Thermal Ventilation, Changeable Adapter Plates, Microfleece, Beanie Liner, Removable Neckgator, Metal Chinstrap Buckle, Helmet Pouch Included, EN 1077:2007 Class A, ASTM F 2040, FIS RH 2013 |
| SIZES | | |
| XS | 52-53 cm | |
| S | 54-55 cm | |
| M | 56-57 cm | |



TEAM SL

| ARTICLE NUMBER | | PRODUCT FEATURES |
|--------------------|----------|---|
| 320413 white/black | | Hardshell Technology, Toolfree Chinguard, Thermal Ventilation, Microfleece, 360° BOA® Fit, Removable Neckgator, Chinguard Included, Helmet Pouch Included, EN 1077:2007 Class B |
| SIZES | | |
| XS/S | 52-55 cm | |
| M/L | 56-59 cm | |
| XL/XXL | 60-63 cm | |



DOWNFORCE FITTING KIT

| ARTICLE NUMBER | |
|----------------|----------|
| 378930 black | |
| SIZES | |
| XS/S | 52-55 cm |
| M/L | 56-59 cm |
| XL/XXL | 60-63 cm |



CHINGUARD

| ARTICLE NUMBER | |
|-------------------|--|
| 378577 black | |
| SIZES | |
| ONE SIZE FITS ALL | |



SENTINEL 5K + SPARE LENS

| ARTICLE NUMBER |
|------------------|
| 390023 chrome/RD |

| PRODUCT FEATURES |
|--|
| Toric Lens, Double Lens, UV400 & Anti Fog, 5K Lens, Extreme Wide Field of Vision, Speed Snap Lens Exchange, Wind Seal, Triple Layer Foam, Extra Facefoam, Silicone Layer, Spare Lens Included, Pouch Included, EVA Case Included |
| LENS 5K chrome: S2, VLT 23% |
| SPARELENS Orange: S1, VLT 57% |

5K



SENTINEL + SPARE LENS

| ARTICLE NUMBER |
|---------------------|
| 390053 silver/black |

| PRODUCT FEATURES |
|---|
| Toric Lens, Double Lens, UV400 & Anti Fog, Extreme Wide Field of Vision, Triple Layer Foam, Speed Snap Lens Exchange, Extra Facefoam, Wind Seal, Silicone Layer, Spare Lens Included, Pouch Included, EVA Case Included |
| LENS Brown: S2, VLT 18% |
| SPARELENS Orange: S1, VLT 57% |



HORIZON 5K RACE + SPARE LENS

| ARTICLE NUMBER |
|------------------|
| 390123 chrome/RD |

| PRODUCT FEATURES |
|---|
| Cylindrical Lens, Double Lens, UV400 & Anti Fog, 5K Lens, Extreme Wide Field of Vision, Triple Layer Foam, Venting Foam, Speed Snap Lens Exchange, Silicone Layer, Spare Lens Included, Pouch Included, EVA Case Included |
| LENS 5K chrome: S2, VLT 23% |
| SPARELENS Orange: S1, VLT 57% |

5K



HORIZON RACE + SPARE LENS

| ARTICLE NUMBER |
|---------------------|
| 390143 silver/black |

| PRODUCT FEATURES |
|--|
| Cylindrical Lens, Double Lens, UV400 & Anti Fog, Extreme Wide Field of Vision, Triple Layer Foam, Venting Foam, Speed Snap Lens Exchange, Silicone Layer, Spare Lens Included, Pouch Included, EVA Case Included |
| LENS Brown: S2, VLT 18% |
| SPARELENS Orange: S1, VLT 57% |



NEVES PRO 5K RACE + SPARE LENS

| ARTICLE NUMBER |
|------------------|
| 390154 chrome/RD |

| PRODUCT FEATURES |
|--|
| Cylindrical Lens, Laminated Double Lens LDL, UV400 & Anti Fog, 5K Lens, Extreme Wide Field of Vision, Interchangeable Lens Exchange, Triple Layer Foam, Venting Foam, Silicone Layer, Spare Lens Included, Pouch Included, EVA Case Included |
| LENS 5K chrome: S2, VLT 23% |
| SPARELENS Orange: S1, VLT 57% |

5K



CONTEX PRO 5K RACE + SPARE LENS

| ARTICLE NUMBER |
|------------------|
| 390163 chrome/RD |

| PRODUCT FEATURES |
|--|
| Toric Lens, Laminated Double Lens LDL, UV400 & Anti Fog, 5K Lens, Extreme Wide Field of Vision, Triple Layer Foam, Venting Foam, Interchangeable Lens Exchange, Silicone Layer, Spare Lens Included, Pouch Included, EVA Case Included |
| LENS 5K chrome: S2, VLT 23% |
| SPARELENS Orange: S1, VLT 57% |

5K



GOGGLE PRO BAG

| ARTICLE NUMBER |
|----------------|
| 374420 |

| PRODUCT FEATURES |
|----------------------------------|
| Water-resistant nylon material |
| Holds up to 10 goggles |
| Compartment for spare lenses |
| Velcro adjustable compartments |
| Outside compartment |
| Inscription space on the outside |
| Durable ripstop construction |

| | |
|-----------|-----------------|
| DIMENSION | 40 * 25 * 13 cm |
| VOLUME | 13 L |

SPARE LENS OVERVIEW

SENTINEL

Double Lens

| | ART. NO. | NAME | BASE LENS | MIRROR COATING | MIRROR | CAT | VLT |
|---|-----------|--------------------------|-------------|----------------|--------|-----|------|
|  | 5< 376141 | SENTINEL SL 5K GOLD | RED | GOLD | FMR | 3 | 15 % |
|  | 376130 | SENTINEL SL SMOKE BLUE | SMOKE | BLUE | FMR | 3 | 12 % |
|  | 376120 | SENTINEL SL SMOKE GREEN | SMOKE | BLUE/GREEN | FMR | 3 | 11 % |
|  | 5< 376151 | SENTINEL SL 5K CHROME | VIOLET | CHROME | FMR | 2 | 23 % |
|  | 376110 | SENTINEL SL RACE | BROWN | SILVER | MR | 2 | 18 % |
|  | 376100 | SENTINEL SL TVT | RED | TVT RED | INSIDE | 2 | 21 % |
|  | 376150 | SENTINEL SL SILVER GREEN | GREEN | SILVER | MR | 2 | 18 % |
|  | 376160 | SENTINEL SL FLASH YELLOW | YELLOW | YELLOW | FMR | 2 | 29 % |
|  | 376140 | SENTINEL SL RD NR 3 | ORANGE | BLUE | FMR | 1 | 48 % |
|  | 376180 | SENTINEL SL ORANGE | ORANGE | - | - | 1 | 57 % |
|  | 376170 | SENTINEL SL YELLOW | YELLOW | - | - | 1 | 75 % |
|  | 376190 | SENTINEL SL CLEAR | TRANSPARENT | - | - | 0 | 81 % |

HORIZON

Double Lens


| | | | | | | | |
|---|-----------|-----------------------------|--------|--------------|--------|---|------|
|  | 5< 376521 | HORIZON SL 5K GOLD | RED | GOLD | FMR | 3 | 15 % |
|  | 378695 | HORIZON SL SMOKE GREEN | SMOKE | GREEN/YELLOW | FMR | 3 | 12 % |
|  | 378704 | HORIZON SL SMOKE BLUE | SMOKE | BLUE | FMR | 3 | 12 % |
|  | 378706 | HORIZON SL SMOKE YELLOW/RED | SMOKE | YELLOW/RED | FMR | 3 | 14 % |
|  | 5< 376511 | HORIZON SL 5K RED | VIOLET | RED | FMR | 2 | 28 % |
|  | 378787 | HORIZON SL TVT | RED | TVT RED | INSIDE | 2 | 21 % |
|  | 378797 | HORIZON SL TVT | GREEN | TVT GREEN | INSIDE | 2 | 24 % |
|  | 378777 | HORIZON SL RD NR 3 | ORANGE | BLUE | FMR | 1 | 48 % |


CONTEX PRO


Laminated Double Lens

| | | | | | | | |
|---|-----------|-----------------------|-------------|------|-----|---|------|
|  | 5< 376811 | CONTEX PRO SL 5K GOLD | RED | GOLD | FMR | 3 | 15 % |
|  | 5< 376821 | CONTEX PRO SL 5K RED | VIOLET | RED | FMR | 2 | 28 % |
|  | 376831 | CONTEX PRO SL ORANGE | ORANGE | - | - | 1 | 57 % |
|  | 376891 | CONTEX PRO SL CLEAR | TRANSPARENT | - | - | 0 | 81 % |

S3 
Bright and sunny conditions
require a dimming lens tone.

S2 
Versatile lens for changeable
weather conditions.

S1 
For cloudy or snowy days on the
mountain.

S0 
Clear lens for night touring.

CONTEX

Double Lens

| | ART. NO. | NAME | BASE LENS | MIRROR COATING | MIRROR | CAT | VLT |
|---|-----------|----------------------|-------------|----------------|--------|-----|------|
|  | 376871 | CONTEX SL BLUE | SMOKE | BLUE | FMR | 3 | 12 % |
|  | 376861 | CONTEX SL RED | ROSE | RED | FMR | 2 | 30 % |
|  | 5< 376714 | NEVES PRO SL 5K GOLD | RED | GOLD | FMR | 3 | 15 % |
|  | 5< 376724 | NEVES PRO SL 5K RED | VIOLET | RED | FMR | 2 | 28 % |
|  | 376764 | NEVES SL BLUE | SMOKE | BLUE | FMR | 3 | 12 % |
|  | 376754 | NEVES SL RED | ROSE | RED | FMR | 2 | 30 % |
|  | 376774 | NEVES SL ORANGE | ORANGE | - | - | 1 | 57 % |
|  | 376784 | NEVES SL CLEAR | TRANSPARENT | - | - | 0 | 81 % |

HOW TO CHANGE THE LENS

SPEED SNAP LENS EXCHANGE

Sentinel & Horizon



INTERCHANGEABLE LENS EXCHANGE

Contex & Neves



STRAPS



376942 STRAP silver



376953 STRAP RD

RD LINE

SPECIALIZED RACE PROTECTION PACKS TO CATER PROFESSIONAL RACING.

GOGGLES 10 pcs



SENTINEL



390939 SENTINEL DH PACK
390959 SENTINEL PACK

HORIZON RACE



391949 HORIZON RACE DH PACK
391959 HORIZON RACE PACK

CONTEX PRO RACE

AVAILABLE IN TWO SIZES: MEDIUM & LARGE



392969 CONTEX PRO 5K RACE PACK

NEVES PRO RACE

AVAILABLE IN TWO SIZES: MEDIUM & LARGE



393974 NEVES PRO 5K RACE PACK

LENSES 20 pcs



- 5K ● 376809 SENTINEL SL 5K gold PACK
● 376819 SENTINEL SL 5K blue PACK
● 376829 SENTINEL SL 5K red PACK
● 376839 SENTINEL SL 5K chrome PACK

● 376849 SENTINEL SL smoke blue PACK
● 376859 SENTINEL SL flash yellow PACK
● 376869 SENTINEL SL RD NR 3 PACK
● 376679 SENTINEL SL yellow PACK
○ 376689 SENTINEL SL clear PACK



- 5K ● 376329 HORIZON SL 5K gold PACK
● 376339 HORIZON SL 5K blue PACK
● 376349 HORIZON SL 5K red PACK
● 376359 HORIZON SL 5K chrome PACK

● 376384 HORIZON SL glacier PACK
● 376369 HORIZON SL smoke blue PACK
● 376379 HORIZON SL RD NR 3 PACK
● 376389 HORIZON SL yellow PACK
○ 376399 HORIZON SL clear PACK



- 5K ● 376769 CONTEX PRO SL 5K gold PACK
● 376739 CONTEX PRO SL 5K blue PACK
● 376779 CONTEX PRO SL 5K red PACK
● 376749 CONTEX PRO SL 5K chrome PACK

● 376794 CONTEX PRO SL glacier PACK
● 376759 CONTEX PRO SL RD NR 3 PACK
● 376789 CONTEX PRO SL orange PACK
○ 376799 CONTEX PRO SL clear PACK
AVAILABLE IN TWO SIZES: MEDIUM & LARGE



- 5K ● 376404 NEVES PRO SL 5K gold PACK
● 376414 NEVES PRO SL 5K red PACK

● 376444 NEVES PRO SL glacier PACK
● 376454 NEVES PRO SL RD NR 3 PACK
● 376464 NEVES PRO SL orange PACK
○ 376474 NEVES PRO SL clear PACK
AVAILABLE IN TWO SIZES: MEDIUM & LARGE

STRAPS 20 pcs



376959 STRAP silver PACK



376979 STRAP Zig Zag PACK



376989 STRAP RD PACK



SIGNATURE 5K PHOTO

ARTICLE NUMBER

370003 black

PRODUCT FEATURES

LENS 5K photo: S1 - S3, VLT 46% - 9%

5K



SIGNATURE 5K

ARTICLE NUMBER

370031 blue/army grey
370021 blue/black

PRODUCT FEATURES

5K Lens
LENS 5K blue: S3, VLT 17%

5K



SIGNATURE

ARTICLE NUMBER

370043 chrome/WCR
370061 black/olive

PRODUCT FEATURES

LENS FMR chrome: S3, VLT 12%
Smoke: S3, VLT 14%



RACE ACCESSORIES

REBELS TRAVELBAG

| ARTICLE NUMBER |
|----------------|
| 383003 |

PRODUCT FEATURES

- Big wheelie bag for ski pros and world travelers
- Co-developed with Head Race Department
- Can be divided into two pieces
- Compression straps
- Top and front handles
- Telescopic handle to be combined with skibag
- Durable outer material

| | |
|-----------|-----------------|
| DIMENSION | 77 * 38 * 42 CM |
| VOLUME | 120 L |
| WEIGHT | 3940 gm |



REBELS COACHES BACKPACK NEW

| ARTICLE NUMBER |
|----------------|
| 383964 |

PRODUCT FEATURES

- Big backpack for coaches, technicians and racers
- Co-developed with Head Race department
- Multiple pockets and compartments
- Reinforced back panel and cushioned shoulder straps
- Detachable folding chair
- Durable outer material

| | |
|-----------|---------------------|
| DIMENSION | 49.5 * 62 * 29.5 CM |
| VOLUME | 75 L |
| WEIGHT | 2380 gm |



REBELS RACING BACKPACK NEW

| ARTICLE NUMBER |
|----------------|
| 383034 L |
| 383044 S |

PRODUCT FEATURES

- Big backpack for racers and tech-reps
- Co-developed with Head Race department
- Separate boot storage
- Fleece lined goggle pocket, two big side pockets
- Reinforced back panel and cushioned shoulder straps
- Durable outer material

| | |
|-----------|-------------------------|
| DIMENSION | 49.5 * 67 * 28.5 CM (L) |
| | 49.5 * 62 * 28.5 CM (S) |
| VOLUME | 90 L (L) |
| | 70 L (S) |
| WEIGHT | 1750 gm (L) |
| | 1660 gm (S) |



REBELS BACKPACK

| ARTICLE NUMBER |
|----------------|
| 383013 |

PRODUCT FEATURES

- Boot carry system on sides
- Fleece lined goggle pocket
- Ergonomic back panel
- Comfortable shoulder and waist straps
- Durable outer material

| | |
|-----------|-----------------|
| DIMENSION | 33 * 55 * 23 CM |
| VOLUME | 30 L |
| WEIGHT | 1060 gm |



REBELS BOOT CARRY ON

ARTICLE NUMBER
383923

PRODUCT FEATURES
Messenger style bag for one pair of skiboots
Co-developed with Head Race department
Inner boot divider which unzips
Hidden shoulder straps for alternate backpack carry
Padded front document pocket
Durable outer material

| | |
|-----------|-----------------|
| DIMENSION | 50 * 36 * 12 CM |
| VOLUME | 25 L |
| WEIGHT | 700 gm |



HEATABLE BOOTBAG

ARTICLE NUMBER
383193

PRODUCT FEATURES
Heatable boot bag featuring AC connection
Stowable backpack straps
Multiple zipped pockets
Padded goggle compartment and adjustable helmet holder

| | |
|-----------|-----------------|
| DIMENSION | 43 * 25 * 58 CM |
| VOLUME | 65 L |
| WEIGHT | 4500 gm |



REBELS DOUBLE SKIBAG

ARTICLE NUMBER
383023

PRODUCT FEATURES
Protective wheelie bag for 2 pairs of skis
Co-developed with Head Race Department
Easy adjust compression straps
Internal sleeves for poles
Durable outer material

| | |
|-----------|------------------|
| DIMENSION | 203 * 18 * 28 CM |
| VOLUME | 110 L |
| WEIGHT | 2580 gm |



REBELS SINGLE SKIBAG

ARTICLE NUMBER
383933 197cm
383953 180cm

PRODUCT FEATURES
Protective bag for one pair of skis
Comfortable carry straps
Simple full zip access
Durable outer material

| | |
|-----------|--|
| DIMENSION | 197.5 * 20 * 23 CM (197cm) 180 * 20 * 23 CM (180cm) |
| VOLUME | 67 L (197cm) 60 L (180cm) |
| WEIGHT | 860 gm (197cm) 800 gm (180cm) |





WORLD CUP SG

ARTICLE NUMBER

381054 white/black/speed blue

PRODUCT FEATURES

- SG Bend Worldcup Race Pole
- 7075 Aluminum
- Race Rubber Grip
- Race Velcro Strap
- DH/SG Cone Basket
- Tungsten Carbide Tip

PRODUCT DETAILS

| | |
|----------|---------|
| DIAMETER | 18 mm |
| LENGTH | 110-135 |



WORLD CUP REBELS CARBON

ARTICLE NUMBER

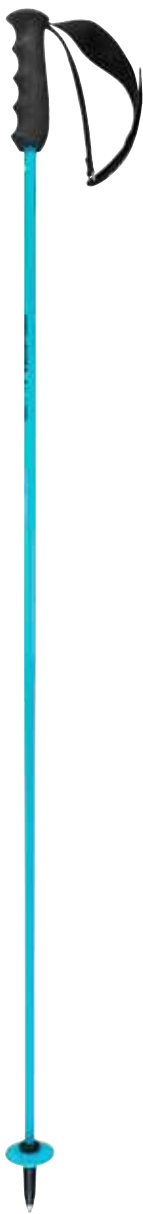
381204 white/black/speed blue

PRODUCT FEATURES

- Worldcup Carbon Race Pole
- Race Rubber Grip
- Race Velcro Strap
- Mini Race Basket
- Tungsten Carbide Tip

PRODUCT DETAILS

| | |
|----------|---------|
| DIAMETER | 12,3 mm |
| LENGTH | 105-140 |



WORLD CUP REBELS CARBON

ARTICLE NUMBER

381214 speed blue/black/white

PRODUCT FEATURES

- Worldcup Carbon Race Pole
- Race Rubber Grip
- Race Velcro Strap
- Mini Race Basket
- Tungsten Carbide Tip

PRODUCT DETAILS

| | |
|----------|---------|
| DIAMETER | 12,3 mm |
| LENGTH | 105-140 |



WORLD CUP SL

ARTICLE NUMBER

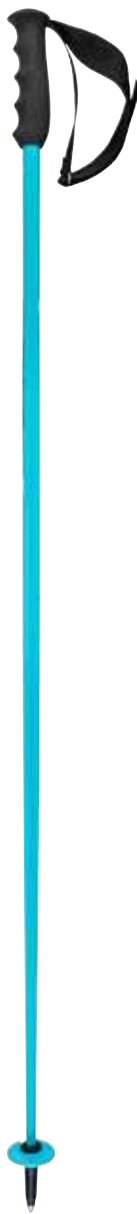
381074 white/black/speed blue

PRODUCT FEATURES

- Worldcup SL Race Pole
- 7075 Aluminum
- Race Rubber Grip
- Race Velcro Strap
- Mini Race Basket
- Tungsten Carbide Tip

PRODUCT DETAILS

| | |
|----------|----------|
| DIAMETER | 18 mm |
| LENGTH | 110- 140 |



WORLD CUP SL

ARTICLE NUMBER

381174 speed blue/black/white

PRODUCT FEATURES

- Worldcup SL Race Pole
- 7075 Aluminum
- Race Rubber Grip
- Race Velcro Strap
- Mini Race Basket
- Tungsten Carbide Tip

PRODUCT DETAILS

| | |
|----------|----------|
| DIAMETER | 18 mm |
| LENGTH | 110- 140 |



HEAD WC SL PROTECTOR

ARTICLE NUMBER

381340 white/black

PRODUCT FEATURES

- Universal HEAD branded Hand Protector
- Fits on both Junior and Adult Aluminum SL poles
- Includes mounting hardware
- 2 protectors / poly bag

PRODUCT DETAILS

| | |
|--------|-----|
| LENGTH | n/a |
|--------|-----|

RACE SPORTSWEAR



RACE FIS SUIT

PRODUCT DETAILS

| ART. NUMBER | COLOR | SIZES |
|--------------------------|-------|--------|
| 821504 (unisex) | YVBK | XS-3XL |
| 821514 (unisex unpadded) | YVBK | XS-3XL |

FABRIC

| | |
|-------------|---|
| LINING | 80 % polyamide 20 % elastane (padding bags and ski pass pocket) |
| INSULATION | 100% polyester for removable padding pieces |
| MAIN FABRIC | 77% polyester 13% elastane 10% polyurethane |

PRODUCT FEATURES

HEAD WORLD CUP REBELS print and design
3D shaped pattern and FIS-approved
centre front opening with YKK® zipper
removable protective pads covering upper arm, forearms, thigh, knee and upper shins
sleeve hem with thumb loop construction
integrated ski pass pocket
inner leg hem with anti-slide elastic



YVBK



back view

RACE SUIT

PRODUCT DETAILS

| ART. NUMBER | COLOR | SIZES |
|-----------------|-------|---------|
| 821524 (unisex) | YVBK | XS-3XL |
| 826504 (junior) | YVBK | 128-176 |

FABRIC

| | |
|-------------|---|
| LINING | 80 % polyamide 20 % elastane (padding bags and ski pass pocket) |
| INSULATION | 100% polyester for removable padding pieces |
| MAIN FABRIC | 87 % polyester, 13 % elastane |

PRODUCT FEATURES

HEAD WORLD CUP REBELS print and design
3D shaped pattern
centre front opening with YKK® zipper
removable protective pads covering upper arm, forearms, thigh, knee and upper shins
sleeve hem with thumb loop construction
integrated ski pass pocket
inner leg hem with anti-slide elastic



YVBK



back view

RACE RAIN COAT

PRODUCT DETAILS

| ART. NUMBER | COLOR | SIZES |
|-----------------|-----------|---------|
| 821534 (unisex) | ● BL ● BK | XS-3XL |
| 826514 (junior) | ● BK ● BL | 128-176 |

FABRIC

| | |
|-------------|--------------------------------------|
| MAIN FABRIC | 100 % polyamide 2,5L with DWR finish |
|-------------|--------------------------------------|

PRODUCT FEATURES

| |
|---|
| HEAD WORLDCUP REBELS print and design |
| centre front with 2-way zipper with flap on top |
| fix hood and waist adjustable with draw cords |
| two hand pockets with press button closure |
| sleeve cuffs with elastic tape inside |
| hem slit at centre back |
| button up construction inside to shorten length |
| fully seam taped |



BK



back view



BL

RACE SHORTS

PRODUCT DETAILS

| ART. NUMBER | COLOR | SIZES |
|-----------------|-------|---------|
| 821544 (unisex) | ● BK | XS-3XL |
| 826524 (junior) | ● BK | 128-176 |

FABRIC

| | |
|-------------|---|
| MAIN FABRIC | 94% polyester 6% elastane with DWR finish |
|-------------|---|

PRODUCT FEATURES

| |
|--|
| HEAD WORLDCUP REBELS print and design |
| adjustable waistband with wide elastic insert on the back for better fit |
| padded side protection inserts |
| front legs opening with 2-way SAB® zippers for easy access |
| inner leg hems with anti-slide elastic |



BK



back view

RACE TEAM JACKET

PRODUCT DETAILS

| ART. NUMBER | COLOR | SIZES |
|-----------------|-------|---------|
| 821424 (men) | ● BK | 46-58 |
| 824564 (women) | ● BK | 34-46 |
| 826574 (junior) | ● BK | 128-176 |

FABRIC

| | |
|-------------|--------------------------------------|
| LINING | 100% polyester |
| | 100% polyester with wicking (hood) |
| INSULATION | 100% polyester padding 80g (body) |
| | 100% polyester padding 60g (sleeves) |
| | 100% polyester padding 40g (hood) |
| MAIN FABRIC | 100% polyester 2L with DWR finish |

PRODUCT FEATURES

| |
|---|
| HEAD WORLDCUP REBELS print and design |
| cut protection fabric on shoulders |
| fix, fully adjustable hood |
| centre front, ventilation, ski pass pocket and inner chest pocket with SAB® zippers |
| chest pocket and hand pockets with waterproof SAB® zippers |
| adjustable sleeve cuffs with soft and stretchy inner cuffs |
| adjustable hem with elastic draw cords |
| fix snow gaiter |
| fully seam taped |



BK



back view

RACE TEAM PANTS

PRODUCT DETAILS

| ART. NUMBER | COLOR | SIZES |
|-----------------|-------|---------|
| 821444 (men) | ● BK | 46-58 |
| 824574 (women) | ● BK | 34-46 |
| 826584 (junior) | ● BK | 128-176 |

FABRIC

| | |
|-------------|--|
| LINING | 100% polyester |
| | 100% polyester with DWR finish (snow gaiter) |
| INSULATION | 100% polyester padding 60g |
| MAIN FABRIC | 100% polyester 2L with DWR finish |

PRODUCT FEATURES

| |
|--|
| HEAD WORLDCUP REBELS print and design |
| Schoeller® cut protection on inner side of legs |
| adjustable waistband with belt loops |
| front fly with press button, hook and SAB® zipper |
| hand pockets with SAB® zippers |
| bottom hem side opening with waterproof SAB® zippers |
| cargo pockets on legs with velcro closure |
| snow gaiter inside leg |
| fully seam taped |



BK



back view



BK
(junior)



back view
(junior)

RACE TEAM BIB PANTS

| PRODUCT DETAILS | | |
|-----------------|-------|-------|
| ART. NUMBER | COLOR | SIZES |
| 821434 (men) | ● BK | 46-58 |

| FABRIC | |
|-------------|--|
| LINING | 100% polyester |
| | 100% polyester with DWR finish (snow gaiter) |
| INSULATION | 100% polyester padding 60g (back part) |
| | 100% polyester padding 40g (front part) |
| MAIN FABRIC | 100% polyester 2L with DWR finish |

| PRODUCT FEATURES | |
|---|--|
| HEAD WORLD CUP REBELS print and design | |
| bib pant with suspenders and belt loops | |
| Schoeller® cut protection on inner side of legs | |
| side seams (zipper close from top to bottom) | |
| with 2-way open end SAB® zippers | |
| front fly and hand pockets with SAB® zippers | |
| cargo pockets on legs with velcro closure | |
| snow gaiter inside leg | |
| fully seam taped | |



BK



back view

RACE ZIP PANTS

| PRODUCT DETAILS | | |
|-----------------|-------|--------|
| ART. NUMBER | COLOR | SIZES |
| 821454 (unisex) | ● BK | XS-3XL |

| FABRIC | |
|-------------|--|
| LINING | 100% polyester ripstop |
| | 100% polyester with DWR finsih (snow gaiter) |
| INSULATION | 100% polyester padding 60g (body) |
| | 100% polyester padding 40g (waistband) |
| MAIN FABRIC | 100% polyester 2L ripstop |

| PRODUCT FEATURES | |
|---|--|
| HEAD WORLD CUP REBELS print and design | |
| detachable suspender and adjustable waistband with belt loops | |
| front fly with press button, hook and SAB® zipper | |
| hand pockets and detachable bib with SAB® zippers | |
| side seams (zipper close from top to bottom) with 2-way open end SAB® zippers | |
| cut protection on inner side of legs | |
| snow gaiter inside leg | |
| fully seam taped | |



BK



back view

RACE NOVA JACKET

| PRODUCT DETAILS | | |
|-----------------|----------------------|-------|
| ART. NUMBER | COLOR | SIZES |
| 821574 (men) | ● BKBL ● BKDY ● BKWH | 46-58 |

| FABRIC | |
|-------------|--------------------------------------|
| LINING | 100% polyester with wicking |
| INSULATION | 100% polyester padding 120g (body) |
| | 100% polyester padding 80g (sleeves) |
| | 100% polyester padding 60g (hood) |
| MAIN FABRIC | 100% polyester 2L mechanical stretch |

| PRODUCT FEATURES | |
|--|--|
| HEAD WORLD CUP REBELS print and design | |
| fix, fully adjustable hood | |
| centre front with waterproof SAB® zipper | |
| chest pocket and hand pockets with waterproof SAB® zippers | |
| adjustable sleeve cuffs with soft and stretchy inner cuffs | |
| adjustable hem with elastic draw cords | |
| fix snow gaiter | |
| fully seam taped | |



BKBL



back view



BKDY



BKWH

RACE NOVA PANTS

| PRODUCT DETAILS | | |
|-----------------|----------------------|-------|
| ART. NUMBER | COLOR | SIZES |
| 821584 (men) | ● BKBL ● BKDY ● BKWH | 46-58 |

| FABRIC | |
|-------------|--|
| LINING | 100% polyester with wicking |
| | 100% polyester with DWR finish (snow gaiter) |
| INSULATION | 100% polyester padding 60g |
| MAIN FABRIC | 100% polyester 2L mechanical stretch |

| PRODUCT FEATURES | |
|---|--|
| HEAD WORLD CUP REBELS print and design | |
| adjustable waistband with belt loops | |
| front fly with press button, hook and SAB® zipper | |
| hand pockets and right thigh pocket with SAB® zippers | |
| bottom hem side opening with waterproof SAB® zippers | |
| cargo pocket on left thigh with velcro closure | |
| cut protection on inner side of legs | |
| loops for suspender attachment inside waistband | |
| snow gaiter inside leg | |
| fully seam taped | |



BKBL



back view



BKDY



BKWH

STAR JACKET

PRODUCT DETAILS

| ART. NUMBER | COLOR | SIZES |
|----------------|----------------|-------|
| 821924 (men) | ● BK ● BL ● DY | 46-58 |
| 824814 (women) | ● BK ● BL ● DY | 34-46 |

FABRIC

| | |
|-------------|--|
| LINING | 100% polyester taffeta |
| INSULATION | 100% polyester PrimaLoft® ThermoPlume® |
| MAIN FABRIC | 100% polyester lightweight tafetta with DWR finish |

PRODUCT FEATURES

| |
|--|
| HEAD WORLD CUP REBELS print and design |
| centre front and hand pockets with bold SAB® zippers |
| hand pocket pouches with brushed warp knit lining |
| integrated ski pass pocket inside left sleeve cuffs |
| elastic binding on hood, sleeve cuffs and bottom hem |



BK



back view



BL



DY

STAR COAT

PRODUCT DETAILS

| ART. NUMBER | COLOR | SIZES |
|----------------|-----------|-------|
| 821934 (men) | ● DY ● BK | 46-58 |
| 824824 (women) | ● DY ● BK | 34-46 |

FABRIC

| | |
|-------------|--|
| LINING | 100% polyester taffeta |
| INSULATION | 100% polyester PrimaLoft® ThermoPlume® |
| MAIN FABRIC | 100% polyester lightweight tafetta with DWR finish |

PRODUCT FEATURES

| |
|--|
| HEAD WORLD CUP REBELS print and design |
| fix, padded hood |
| centre front with bold 2-way SAB® zipper |
| hand pockets with bold SAB® zippers |
| brushed warp knit lining |
| elastic binding on hood, sleeve cuffs and bottom hem |



BK



back view



DY

RACE KINETIC HOODED JACKET

PRODUCT DETAILS

| ART. NUMBER | COLOR | SIZES |
|--------------|-----------|-------|
| 821594 (men) | ● BK ● BL | 46-58 |

FABRIC

| | |
|-------------|--------------------------------|
| LINING | 100% polyester |
| INSULATION | 100% polyester padding 180g |
| MAIN FABRIC | 100% polyester with DWR finish |

PRODUCT FEATURES

| |
|---|
| HEAD WORLD CUP REBELS print and design |
| lightweight outer shell and lining fabric |
| fix, padded hood |
| centre front and hand pockets with SAB® zippers |
| elastic binding on hood, sleeve cuffs and hem |



BL



back view



BK

RACE KINETIC JACKET

PRODUCT DETAILS

| ART. NUMBER | COLOR | SIZES |
|-----------------|-------------|---------|
| 821604 (men) | ● BK ● BLWH | 46-58 |
| 824504 (women) | ● BK | 34-46 |
| 826534 (junior) | ● BK ● BLWH | 128-176 |

FABRIC

| | |
|-------------|---------------------------------------|
| LINING | 100% polyester (main body) |
| | 100% polyester with DWR finish (hood) |
| INSULATION | 100% polyester 180g (body) |
| | 100% polyester 80g (collar) |
| MAIN FABRIC | 100% polyester with DWR finish |

PRODUCT FEATURES

| |
|---|
| HEAD WORLD CUP REBELS print and design |
| lightweight outer shell and lining fabric |
| padded stand up collar with integrated stow-away hood |
| centre front and hand pockets with SAB® zippers |
| elastic binding on sleeve cuffs and hem |



BK



back view



BLWH

RACE SOFTSHELL JACKET

PRODUCT DETAILS

| ART. NUMBER | COLOR | SIZES |
|-----------------|-------|---------|
| 821624 (men) | ● BK | 46-58 |
| 826544 (junior) | ● BK | 128-176 |

FABRIC

| | |
|-------------|---|
| LINING | 100% polyester (collar, shoulders) |
| MAIN FABRIC | 94% polyester 6% elastane with DWR finish |

PRODUCT FEATURES

| |
|---|
| HEAD WORLD CUP REBELS print and design |
| classic stand up collar |
| centre front with SAB® zipper and chin protection |
| hand pockets with SAB® zippers |
| padded shoulders |
| body hem with elastic tape |
| partially elastic binding on sleeve cuffs |



BK



back view

RACE HOODIE

PRODUCT DETAILS

| ART. NUMBER | COLOR | SIZES |
|-----------------|----------------|---------|
| 821564 (unisex) | ● BL ○ WH ● BK | XS-3XL |
| 826554 (junior) | ● BL ○ WH ● BK | 128-176 |

FABRIC

| | |
|-------------|---------------------------------|
| LINING | 100% cotton (hood) |
| MAIN FABRIC | 100% cotton with brushed inside |

PRODUCT FEATURES

| |
|---|
| HEAD WORLD CUP REBELS print and design |
| lined hood |
| hood with extra wide draw cord adjustment (only for unisex) |
| ribbed body hem and sleeve cuffs |
| wishbone loop and flag label at left hem |



BL



WH



BK



BL
(junior)



**WORLDCUP
REBELS**



RACE T-SHIRT

PRODUCT DETAILS

| ART. NUMBER | COLOR | SIZES |
|-----------------|-------|---------|
| 821664 (men) | ● BK | 46-58 |
| 824534 (women) | ● BK | 34-46 |
| 826564 (junior) | ● BK | 128-176 |

FABRIC

MAIN FABRIC 100% cotton single jersey

PRODUCT FEATURES

HEAD print and design
rib crew neck collar
wishbone loop and flag label at left sleeve



BK



back view



BK
(women)

RACE SERVICE JOGGING PANTS

PRODUCT DETAILS

| ART. NUMBER | COLOR | SIZES |
|-----------------|-------|--------|
| 821554 (unisex) | ● BK | XS-3XL |

FABRIC

LINING 94% recycle polyester 6% polyester with wicking
MAIN FABRIC 100% polyester with wicking
81% polyester 19% elastane with wicking

PRODUCT FEATURES

HEAD WORLDCUP REBELS print and design
sporty jogging pants
adjustable waistband with wide elastic insert on back and drawcord for better fit
front fly with SAB® zipper



BK



back view

FLEX SEAMLESS LS

PRODUCT DETAILS

| ART. NUMBER | COLOR | SIZES |
|----------------|----------------|-------|
| 811913 (men) | ● NV ● BK ○ WH | M-XL |
| 814913 (women) | ● NV ● BK ○ WH | S-L |

FABRIC

| | |
|-------------|--------------------------------|
| MAIN FABRIC | 97% polyamide 3% elastane knit |
|-------------|--------------------------------|

PRODUCT FEATURES

- seamless body mapping design
- fabric is engineered by zone, giving each area the unique structure
- high stretching function



NV



back view



BK



WH

PROMO HEAD VEST

PRODUCT DETAILS

| ART. NUMBER | COLOR | SIZES |
|--------------|-------|-------|
| 821672 (men) | ● BK | 46-58 |

FABRIC

| | |
|-------------|---|
| LINING | 94% recycle polyester 6 % polyester with wicking |
| MAIN FABRIC | 94% polyester 6% polyurethane power stretch with brushed back and anti pilling finish |

PRODUCT FEATURES

- HEAD WORLDCUP REBELS print and design
- centre front and hand pockets with SAB® zippers
- classic stand up collar with chin protection
- elastic binding on collar and hem



BK



back view

HEAD HOODIE FZ

PRODUCT DETAILS

| ART. NUMBER | COLOR | SIZES |
|-----------------|-------|--------|
| 821634 (unisex) | ● BK | XS-3XL |

FABRIC

| | |
|-------------|---------------------------------|
| LINING | 100% cotton (hood) |
| MAIN FABRIC | 100% cotton with brushed inside |

PRODUCT FEATURES

- HEAD print and design
- lined hood
- full zip construction with chin protection
- centre front with YKK® zipper
- hood with extra wide draw cord adjustment
- kangaroo pocket
- ribbed body hem and sleeve cuffs
- wishbone loop and flag label at left sleeve cuff



BK



back view

HEAD T-SHIRT

PRODUCT DETAILS

| ART. NUMBER | COLOR | SIZES |
|----------------|-------|-------|
| 821674 (men) | ○ WH | 46-58 |
| 824554 (women) | ○ WH | 34-46 |

FABRIC

| | |
|-------------|---------------------------|
| MAIN FABRIC | 100% cotton single jersey |
|-------------|---------------------------|

PRODUCT FEATURES

- HEAD print and design
- rib crew neck collar
- wishbone loop and flag label at left sleeve



WH



back view



WH
(women)

WCR HOODIE

PRODUCT DETAILS

| ART. NUMBER | COLOR | SIZES |
|-----------------|-------|--------|
| 821654 (unisex) | ● BK | XS-3XL |

FABRIC

| | |
|-------------|---------------------------------|
| LINING | 100% cotton (hood) |
| MAIN FABRIC | 100% cotton with brushed inside |

PRODUCT FEATURES

| |
|--|
| HEAD WORLDCUP REBELS print and design |
| lined hood |
| hood with extra wide draw cord adjustment |
| ribbed body hem and sleeve cuffs |
| wishbone loop and flag label at left sleeve cuff |



BK



back view

WCR T-SHIRT

PRODUCT DETAILS

| ART. NUMBER | COLOR | SIZES |
|----------------|-------|-------|
| 821694 (men) | ● BL | 46-58 |
| 824544 (women) | ● BL | 34-46 |

FABRIC

| | |
|-------------|---------------------------|
| MAIN FABRIC | 100% cotton single jersey |
|-------------|---------------------------|

PRODUCT FEATURES

| |
|---|
| HEAD WORLDCUP REBELS print and design |
| rib crew neck collar |
| wishbone loop and flag label at left sleeve |



BL



back view



BL
(women)

HEAD BEANIE

PRODUCT DETAILS

| ART. NUMBER | COLOR | SIZES |
|-------------|------------------------------------|----------|
| 827169 | ● WHBK ● OCBK ● OLBK ● RDBK ● DYBK | one size |

FABRIC

| | |
|-------------|----------------------|
| MAIN FABRIC | 50% wool 50% acrylic |
|-------------|----------------------|

PRODUCT FEATURES

| |
|-------------------------------|
| double layered rib knit |
| soft fleece lining |
| oversized, slouchy fit |
| bold HEAD print on both sides |



WHBK



OCBK



OLBK



RDBK



DYBK

FLEXION SUSPENDERS

PRODUCT DETAILS

| ART. NUMBER | COLOR | SIZES |
|-------------|-------|----------|
| 828018 | ● BK | one size |

FABRIC

| | |
|-------------|---|
| MAIN FABRIC | 42% polyester 6% rubber 3% polypropylene 49% polyamide |
|-------------|---|

PRODUCT FEATURES

| |
|---|
| continuous HEAD logo heat embossing |
| velcro closure on front and back |
| centre back piece with engraved WISHBONE |
| adjustable one size fits all |
| matching suspender loops inside men's ski pants |



BK

JOIN THE REBELS-CLUB!

EXCLUSIVE BENEFITS FOR SKI RACING FANS, INCLUDING A UNIQUE RACING APP.



**WORLD CUP
REBELS**

COMMUNITY

Members of the HEAD Rebels Club can now enjoy very special benefits. Sign up at head.com/rebelsclub to receive the latest news, get invited to exclusive events and receive special Rebels shop offers. The HEAD Rebels Club app - unique in ski racing - is also brand new.

NEWS

Keeping you up to speed on all the latest information about the HEAD Worldcup Rebels, behind the scenes stories and the full range of HEAD racing products.

iSKI-TROPHY

This app tracks your ski days throughout the season. You can win trophies that give you access to competitions. A ranking list and comparison board with other members motivates you to get the most out of your skiing.

BECOME A DIGITAL REBEL!

The new HEAD Rebels Club app can be downloaded from the Google Play Store and the App Store.

DOWNLOAD THE APP NOW:



**DOWNLOAD
THE APP NOW!**

OFFICIAL FIS REGULATIONS

| DISCIPLINE | | SKI LENGTH (MINIMUM) SKI LENGTH MEASUREMENT TOLERANCE OF +/-1 CM | RADIUS (MINIMUM) | PROFILE WIDTH UNDER BINDING | PROFILE WIDTH IN FRONT OF BINDING | MAX. STANDING HEIGHT (SKI/ PLATES/BINDING) |
|------------|---|--|---------------------|--------------------------------|--------------------------------------|--|
| DH | m | 218 ** | 50 | <= 65 | <= 95 | 50 |
| | w | 210 ** | 50 | <= 65 | <= 95 | 50 |
| SG | m | 210** | 45 | <= 65 | <= 95 | 50 |
| | w | 205** | 40 | <= 65 | <= 95 | 50 |
| GS | m | 193** | 30 | <= 65 | <= 103 | 50 |
| | w | 188** | 30 | <= 65 | <= 103 | 50 |
| SL | m | 165* | | <= 63 | | 50 |
| | w | 155 | | <= 63 | | 50 |

** -5cm tolerance for FIS / *Men U18 (first year) at FIS -10cm tolerance

U14 (K1) AND U16 (K2)

| DISCIPLINE | | SKI LENGTH (MINIMUM) SKI LENGTH MEASUREMENT TOLERANCE OF +/-1 CM | RADIUS (MINIMUM) | PROFILE WIDTH UNDER BINDING | MAX. STANDING HEIGHT (SKI/ PLATES/BINDING) |
|------------|--------------|--|---------------------|--------------------------------|--|
| SG | U14 (K1) m/w | | | <= 65 | 50 |
| | U16 (K2) m/w | >= 183 | 30 | <= 65 | 50 |
| GS | U14 (K1) m/w | <= 188 | 17 | <= 65 | 50 |
| | U16 (K2) m/w | <= 188 | 17 | <= 65 | 50 |
| SL | U14 (K1) m/w | >= 130 | | | 50 |
| | U16 (K2) m/w | >= 130 | | | 50 |

>= minimum / <= maximum

WORLD CUP REBELS

SEASON 23/24



**WORLD CUP
REBELS**



**ESTELLE
ALPHAND**



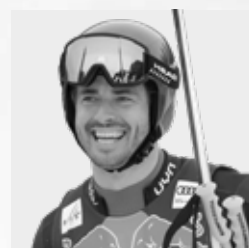
**EMMA
AICHER**



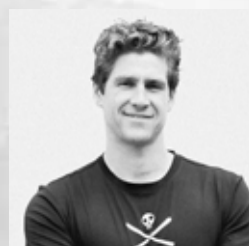
**STEFAN
BABINSKY**



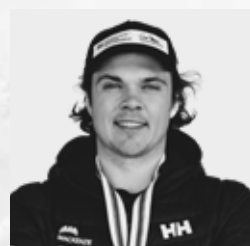
**MATTHIEU
BAILET**



**GUGLIELMO
BOSCA**



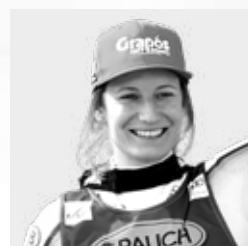
**RYAN
COCHRAN-SIEGLE**



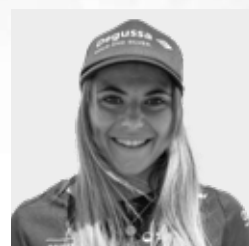
**JAMES
CRAWFORD**



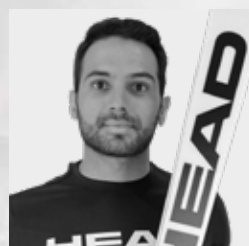
**ELENA
CURTONI**



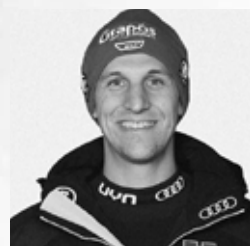
**LENA
DÜRR**



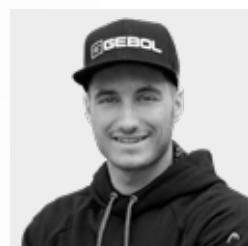
**DELIA
DURRER**



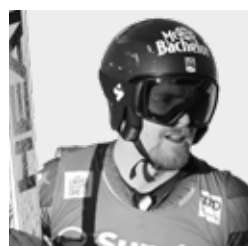
**MATTHIEU
FAIVRE**



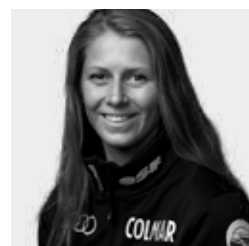
**JOSEF
FERSTL**



**PATRICK
FEURSTEIN**



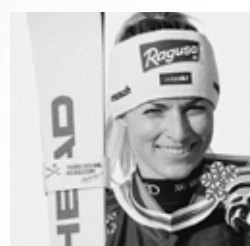
**TOMMY
FORD**



**LAURA
GAUCHE**



**FRANZISKA
GRITSCH**



**LARA
GUT-BEHRAMI**



**SARA
HECTOR**



**JESSICA
HILZINGER**



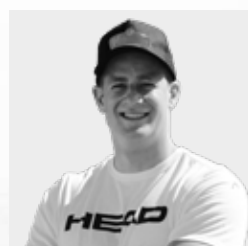
**WENDY
HOLDENER**



**META
HROVAT**



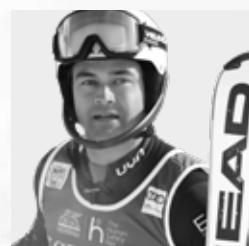
**CORNELIA
HÜTTER**



**SIMON
JOCHER**



**ELISABETH
KAPPAURER**



**TOBIAS
KASTLUNGER**



**VINCENT
KRIECHMAYR**



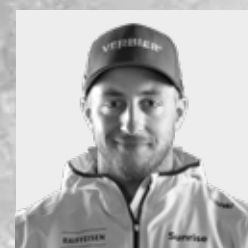
**KAJSA
VICKHOFF LIE**



**ATLE LIE
MCGRATH**



**RAGNHILD
MOWINCKEL**



**JUSTIN
MURISIER**



**NINA
ORTLIEB**



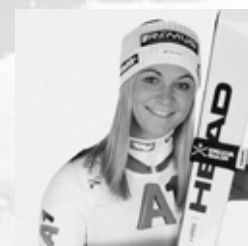
**ALEXIS
PINTURAUT**



**LAURA
PIROVANO**



**ALBERT
POPOV**



**ARIANE
RÄDLER**



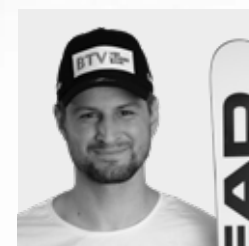
**CAMILLE
RAST**



**GILLES
ROULIN**



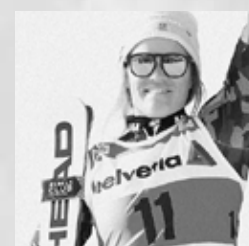
**ALEXANDER
SCHMID**



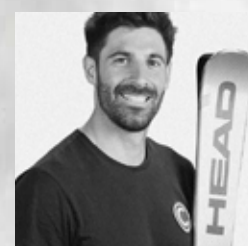
**JOHANNES
STROLZ**



**CORINNE
SUTER**



**ANNA
SWENN-LARSSON**



**ADRIEN
THEAUX**



**MARIA THERESE
TVIBERG**



**STEPHANIE
VENIER**



**JOAN
VERDU**

Marco Abbuzzese
Nils Alphand
Erik Arvidsson
Ebba Årsjö
Liza Backlund
Vittoria Cappellini
Keely Cashman
Eliane Christen
Denis Corthay
Remi Cuhe
Alizée Dahon
Armin Dornauer
Simon Efimov
Magdalena Egger

Stefan Eichberger
Adur Etxezarreta
Lukas Feurstein
Adrien Fresquet
Noah Geisleder
Dzenifera Germane
Ilaria Ghisalbetti
Anton Grammel
Jakob Greber
Lisa Grill
Halvor Hilde Gunleiksrud
Michaela Heider
Oscar Heine
Adam Hofstedt

Aline Höpli
A J Hurt
Matthias Iten
Vanessa Kasper
Amelie Klopfenstein
Yohei Koyama
Charlotte Lingg
Hilma Lövblom
Andrine Maarstoel
Janine Mächler
Reto Mächler
Tricia Mangan
Armand Marchant
Tijan Marovt

Jasmin Mathis
Alessio Miggiano
Nicolo Molteni
Cande Moreno
Maria Niederndorfer
Michelle Niederwieser
Vanessa Nussbaumer
Ryunosuke Ohkoshi
Cornelia Öhlund
Victoria Olivier
Jesper Saltvik Pedersen
Karoline Pichler
Elisa Platino
Iulija Pleshkova

Jesper Pohjolainen
Elisabeth Reisinger
Ludovica Righi
Mattias Rönngren
Marta Rossetti
Amanda Salzgeber
Oscar Andreas Sandvik
Christine Scheyer
Rosina Schneeberger
Jacob Schramm
Dominik Schwaiger
Maximilian Schwarz
Marinus Sennhofer
Alexandra Skorokhodova

Karen Smadja Clement
Laurie Taylor
Broderick Thompson
Pavel Trikhichev
Luis Tritscher
Louis Tuair
Franjo Von Allmen
Henrik Von Appen
Martin-Luis Walch
Ralph Weber
Inni Holm Wembstad
Martina Willibald
Monica Zanoner
Sarah Zoller

HEADQUARTERS

HEAD Sport GmbH
Wuhrkopfweg 1
A-6921 Kennelbach
Austria
T. +43 5574 608 0

HEAD Sport GmbH
Branch Schwechat
Tyroliaplatz 1
A-2320 Schwechat
Austria
T. +43 1 70 1790
E. marketing@tyrolia.com

HEAD UNITS

AUSTRIA
HEAD Austria GmbH
Tyroliaplatz 1
2320 Schwechat
Austria
T. +43 1 701 79 0
E. info@at.head.com

BENELUX
HEAD BeNeLux BV.
Plesmanstraat 1
3833 LA Leusden
The Netherlands
T. +31 33 2030 117
E. info.benelux@head.com

CANADA
HEAD Canada Inc.
935A Southgate Dr. Unit 4
Guelph, ON, N1L 0B9
Canada
T. +1 800 265 7257
E. info@ca.head.com

CZECH REPUBLIC & SLOVAKIA
HEAD Sport s.r.o.
Sportovní 457
252 42 Vestec
Czech Republic
T. +420 267 2811 11
E. info.czechia@head.com

FRANCE
HEAD France SAS
ZA les Condamines
Bresson BP 29
38320 Eybens
France
T. +33 476 62 69 00
E. standard@fr.head.com

GERMANY
HEAD Germany GmbH
Velaskostr. 8
85622 Feldkirchen
Germany
T. +49 89 90 99 95 0
E. info@de.head.com

ITALY
Mares S.p.A.
Salita Bonsen, 4
16035 Rapallo (GE)
Italy
T. +39 0185 2011
E. info-head@it.head.com

JAPAN
HEAD Japan Co., Ltd.
M-City Edogawabashi Building 3F
1-44-10-3F Sekiguchi Bunkyo-ku
Tokyo 112-0014
Japan
T. +81 3 3528 9810
E. sales@jp.head.com

HEAD Skiboot Division
Via Mure, 45/d
31030 Altivole, Treviso
Italy
T. (+39) 0423 527-555

HEAD Norway AS
Vollsveien 13H
1366 Lysaker
Norway
T. +47 971 14 949
E. info.norway@head.com

OCEANIA
HEAD Oceania PTY LTD
Unit 2A
93 Burnside Road
Yatala, QLD 4207
Australia
T. +61 (0)7 3386 1210
E. headski.au@head.com

POLAND
HEAD Poland sp. z o.o.
Ul. Rydlówka 20
30-363 Kraków
Poland
T. +48 12 255 44 00
E. info@pl.head.com

SCANDINAVIA
(Sweden, Denmark, Finland)
HEAD Scandinavia AB
Prästvägen 2
837 52 Åre
Sweden
T. +46 647 50610
E. info.scandinavia@head.com

SPAIN
HEAD Spain SA
Roger 65-67 5a
08028 Barcelona
Spain
T. +34 93 409 20 80
E. info@es.head.com

SWITZERLAND
HEAD Switzerland AG
Rothusstrasse 17
6331 Hünenberg
Switzerland
T. +41 41 767 07 07
E. info@ch.head.com

UNITED KINGDOM
HEAD UK LTD
2 Beeson Road
Kendal, Cumbria
LA9 6BW
UK
T. +44 15 39 72 47 40
E. info@uk.head.com

USA
HEAD USA, Inc.
3125 Sterling Circle
Suite 101
Boulder, CO 80301
USA
T. +1 800 874 3235
E. info@us.head.com

HEAD PARTNER

ARGENTINA
Sports & Adventure S.A.
T. +54 11 4711 6411
E. recepcion@grupovieytes.com

AZERBAIJAN
Rich Company
T. +994 51 742 0089
E. office@richsport.az

BELARUS
Shkursky Alexandr Viktorovich
T. +375 296206131
E. alex@cast.by

BULGARIA
Miras-Krastevi LTD
T. +359 88 206 4060
E. office@miras-sport.com

CHILE
Inver Tech Ltda
T. +56 2 681 23 08
E. pablo.zuninoerlauer@gmail.com

CHINA
Nanjing B.C. Sports Products
T. +86 13838561630
E. xily@halti.com.cn

CROATIA & BIH
MARINES d.o.o.
T. +385 1 6055 625
E. andrej@marines.hr

ESTONIA
Sportland International Group
T. +372 6 548 434
E. info@sportland.ee

GEORGIA
D.V. Sport Ltd.
T. +995 32 2518949
E. dvSPORT@dvSPORT.ge

GREECE
Parnass Ski
T. +30 22670 22646
E. info@parnass.gr

HUNGARY
WINTERSPORT Co. Ltd.
T. +36 70 376 0640
E. wintersport@wintersport.hu

ICELAND
Utivera EHF T/A Everest
T. +354 533 44 50
E. everest@everest.is

KAZAKHSTAN
MAK ImpEx. Ltd.
T. +7 727 2663333
E. makimpex.kz@gmail.com

KOSOVO
SINA Ltd.
T. +377 44 124 955
E. sinaltd.perparim@gmail.com

LATVIA
Burusports
T. +371 67317780
E. info@burusports.lv

LEBANON
Mike Sport
T. +961 1 8888 55
E. mispo@mikesport.com

LITHUANIA
Baltaura LT
T. +370 687 431 82
E. baltaura@baltaura.lt

MACEDONIA
Vekon Int Dooel
T. +389 7 039 3341
E. r.kochovski@elteh.com.mk

NEW ZEALAND
Allsports Distribution Ltd
T. +64 7 377 1033
E. info@allsports.co.nz

ROMANIA
SC Nevesport SRL T
T. +40 (740) 676 586
E. nagynorbertski@gmail.com

SERBIA
Markoni Sport d.o.o.
T. +381692628828
E. veleprodaja@markonisport.rs

SOUTH KOREA
Alchemist
T. +82 2 430 8060
E. head@alchemist.kr

TURKEY
SPORTCITY
Hakan Osman Turnaoglu
T. +90 532 351 9494
E. hakan@sportcity.com.tr

UKRAINE
Extreme Style
T. +380 97 511 6510
E. denis@eltrade.com.ua

UZBEKISTAN
MEGASHOP LLC
T. +998 71 235 91 81
E. buyer.hardgoods@union-space.com



Article: 389244-EN

